

THE DERBY II 1,975 SQ.FT.

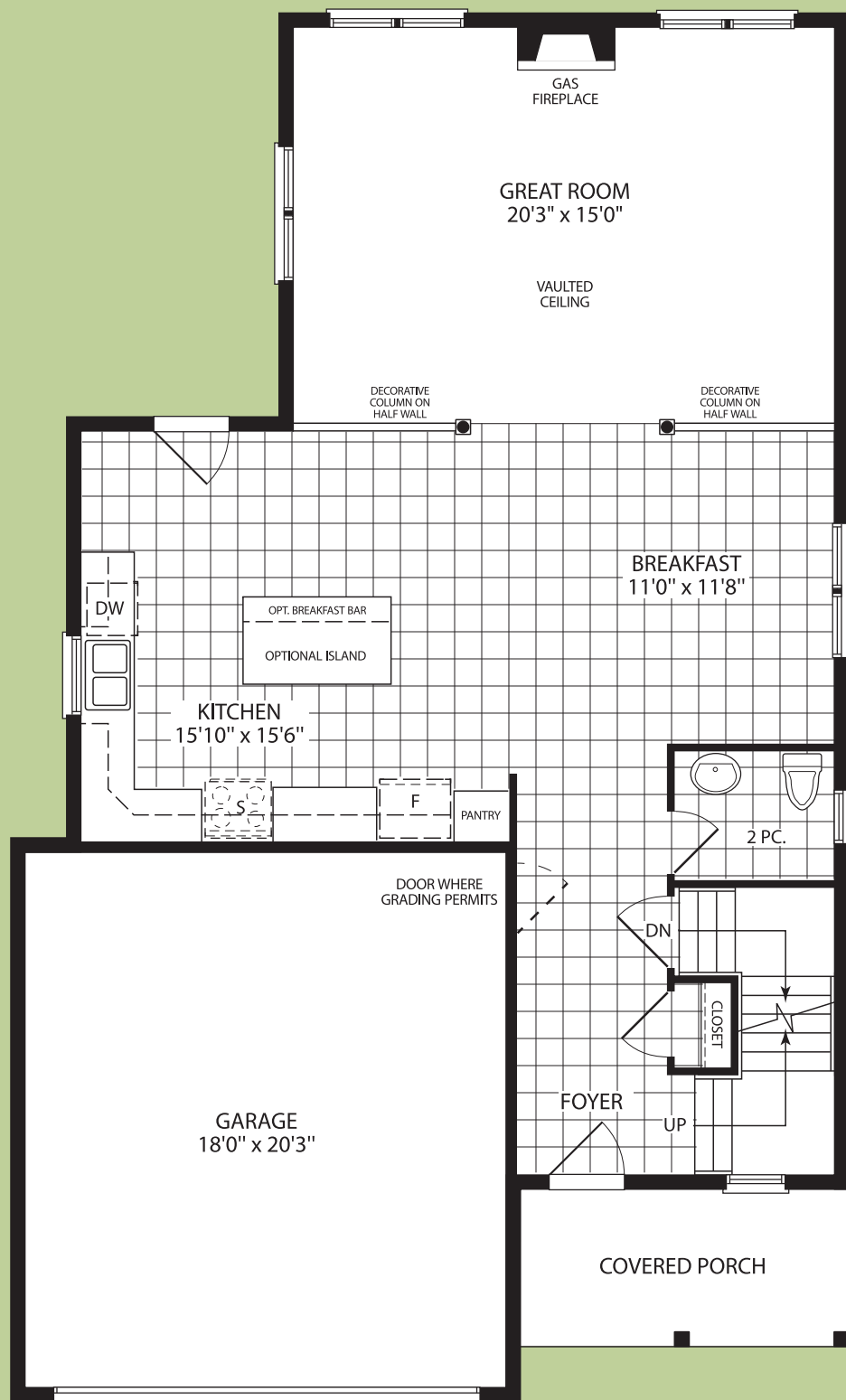


GRANDVIEW
HOMES

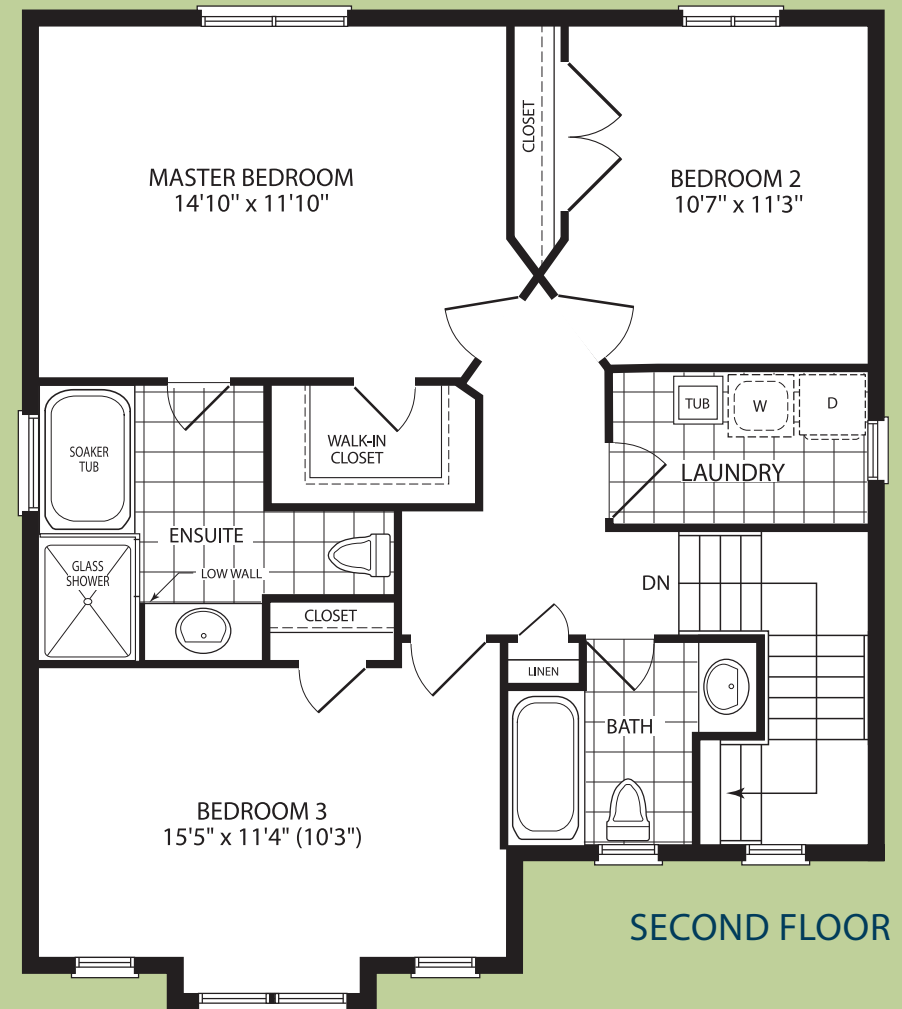


THE DERBY II

1,975 SQ.FT.



MAIN FLOOR



SECOND FLOOR



BASEMENT

ORIENTATION OF HOMES MAY BE REVERSED. STEPS AND PORCHES MAY VARY AT ANY EXTERIOR ENTRANCE WAYS DUE TO GRADING VARIANCE. ACTUAL USABLE FLOOR SPACE MAY VARY FROM THE STATED AREA. SQUARE FOOTAGE OF SOME MODELS MAY INCLUDE AREA THAT IS "OPEN TO BELOW". ALL RENDERINGS ARE ARTIST'S CONCEPT. SPECIFICATIONS AND ARCHITECTURAL DETAILING SUBJECT TO MINOR MODIFICATIONS. SOME FEATURES SHOWN MAY BE OPTIONAL. E.&O.E.

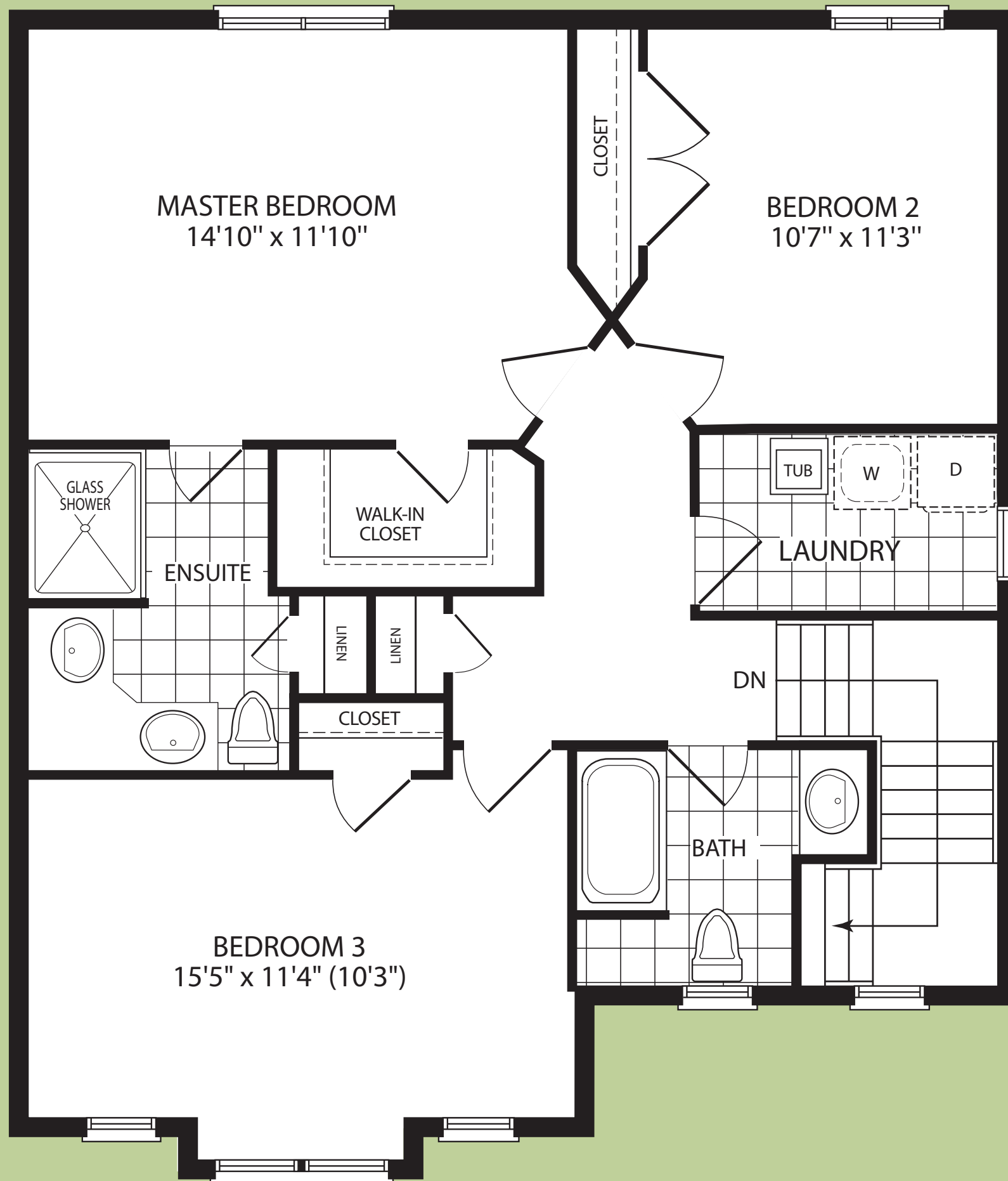


GRANDVIEW
HOMES

THE DERBY II

OPTIONAL ENSUITE LAYOUT

1,975 SQ.FT.



ORIENTATION OF HOMES MAY BE REVERSED. STEPS AND PORCHES MAY VARY AT ANY EXTERIOR ENTRANCE WAYS DUE TO GRADING VARIANCE. ACTUAL USABLE FLOOR SPACE MAY VARY FROM THE STATED AREA. SQUARE FOOTAGE OF SOME MODELS MAY INCLUDE AREA THAT IS "OPEN TO BELOW". ALL RENDERINGS ARE ARTIST'S CONCEPT. SPECIFICATIONS AND ARCHITECTURAL DETAILING SUBJECT TO MINOR MODIFICATIONS. SOME FEATURES SHOWN MAY BE OPTIONAL. E.&O.E.



GRANDVIEW
HOMES